

Reconfiguration Discussion 2018

District Priorities

- Maintain high quality educational programming despite declining enrollment
- Equitable alignment of State and Federal Resources
- Balanced class sizes
- Efficient use of building space

Possible Reconfiguration Plans **no longer under consideration.**

1.	Maintain current configuration.	
2.	Bond issue to build new “super-elementary” building.	
3.	High School	9-12
	Middle School	5-8
	Lincoln	K,1,2
	Soo Twp.	3,4
	Washington	½ Malcolm ½ TBD
	Malcolm	closed
4.	High School	9-12
	Middle School	6-8
	Lincoln	2,3
	Soo Twp.	K,1
	Washington	4,5
	Malcolm	no change
5.	High School	9-12
	Middle School	6-8
	Lincoln	K,1
	Soo Twp.	2,3
	Washington	4,5
	Malcolm	no change
6.	High School	9-12
	Middle School	6-8
	Lincoln	4,5
	Soo Twp.	2,3
	Washington	K,1
	Malcolm	no change
7.	High School	9-12
	Lincoln	6-8
	Middle School	K-5
	Washington	½ Malcolm ½ TBD
	Malcolm	closed
	Soo Twp.	closed
8.	High School	9-12 (including alternative)
	Lincoln	6-8
	Middle School	K-5
	Washington	closed
	Malcolm	closed
	Soo Twp.	closed

WHAT MIGHT OUR DISTRICT LOOK LIKE IN THE FUTURE?

Scenario 1

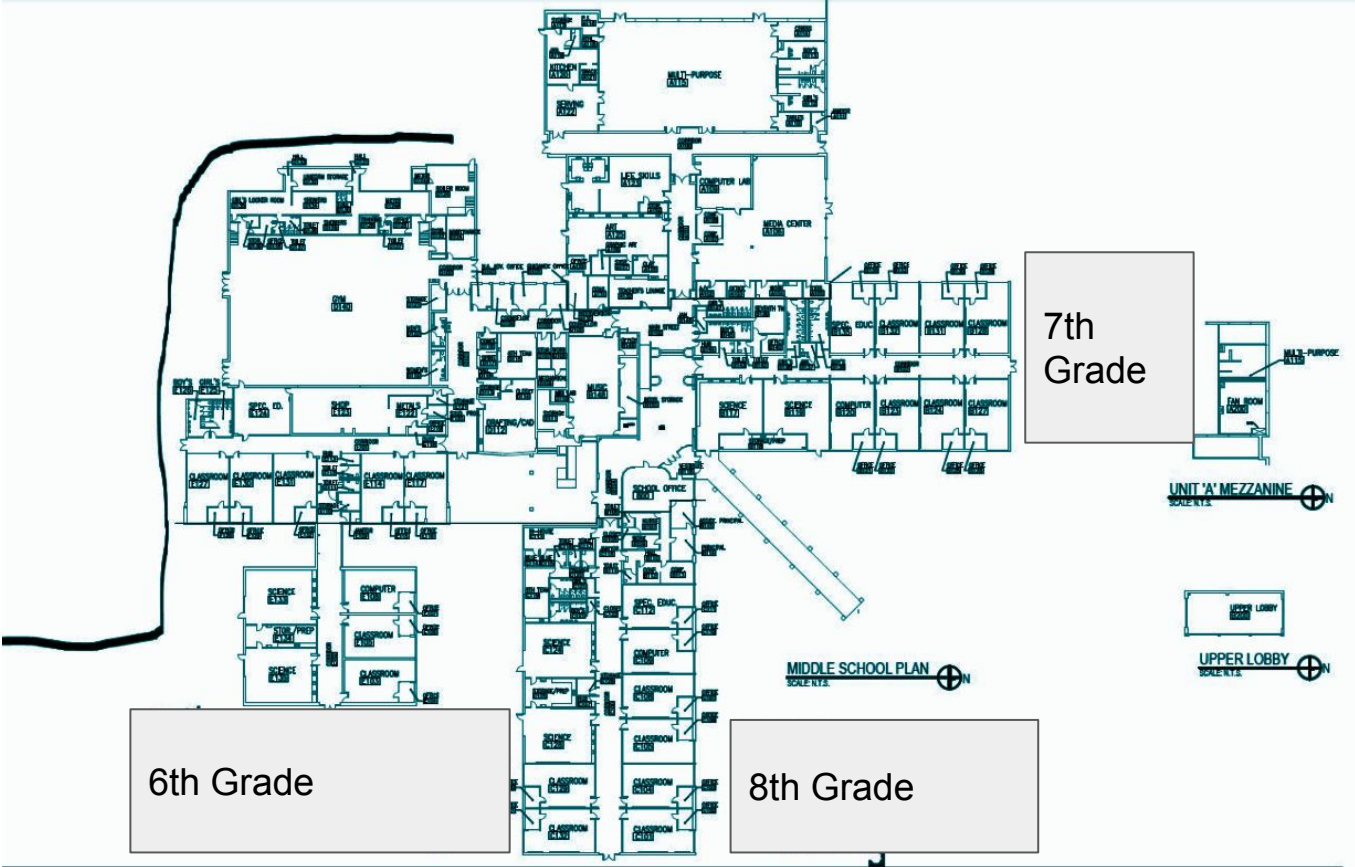
Sault Area High School and Career Center	8-12
Sault Area Middle School	5-7
Lincoln Elementary	2-4
Soo Township Elementary	K-1
Washington Elementary	½ Malcolm High School ½ TBD
Malcolm High School	closed

Scenario 2

Sault Area High School and Career Center	9-12
Sault Area Middle School	5-8
Lincoln Elementary	2-4
Soo Township Elementary	K-1
Washington Elementary	½ Malcolm High School ½ TBD
Malcolm High School	closed

Current SAMS Configuration

Scenario 1



Proposed Middle School 5-7

Scenario 1

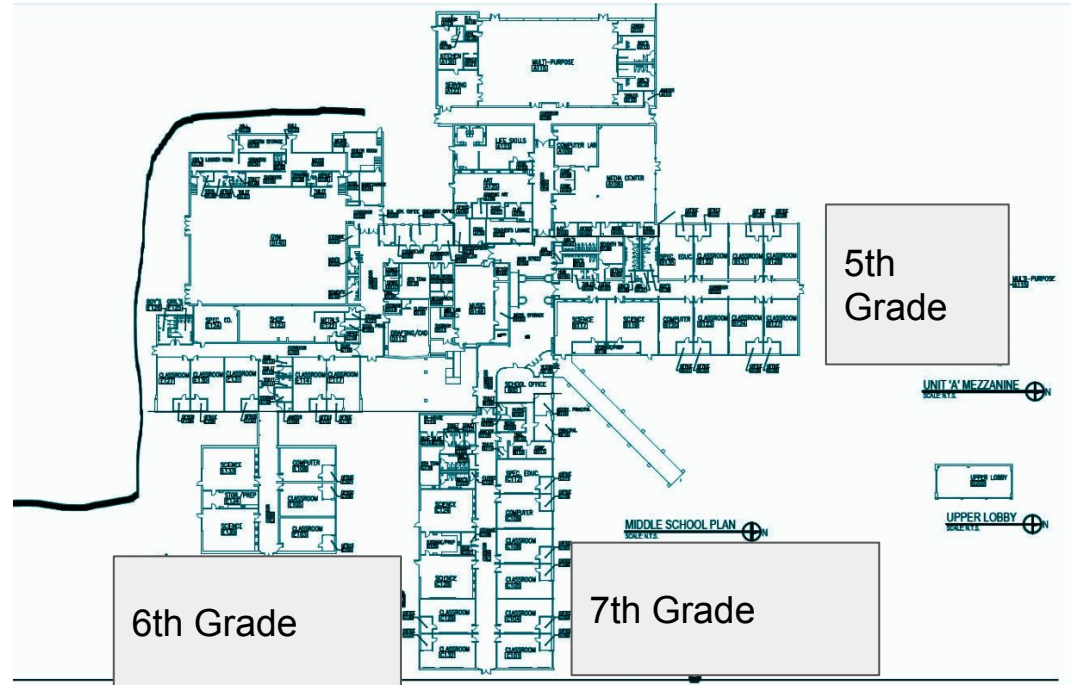
7:15-7:50 SPARK Little Gym
8:00-10:25 Core 1 or Core 2
10:30-11:00 WIN
11:00-11:35 Lunch and Recess
11:40-12:25 Specials

- Art
- Music/Beg. Band
- PE 1
- PE 2/Health
- STEM

12:30-2:50 Core 2 or Core 1
2:50-3:00 Check Out (Planner, Homework, Pack Up)

CORE-

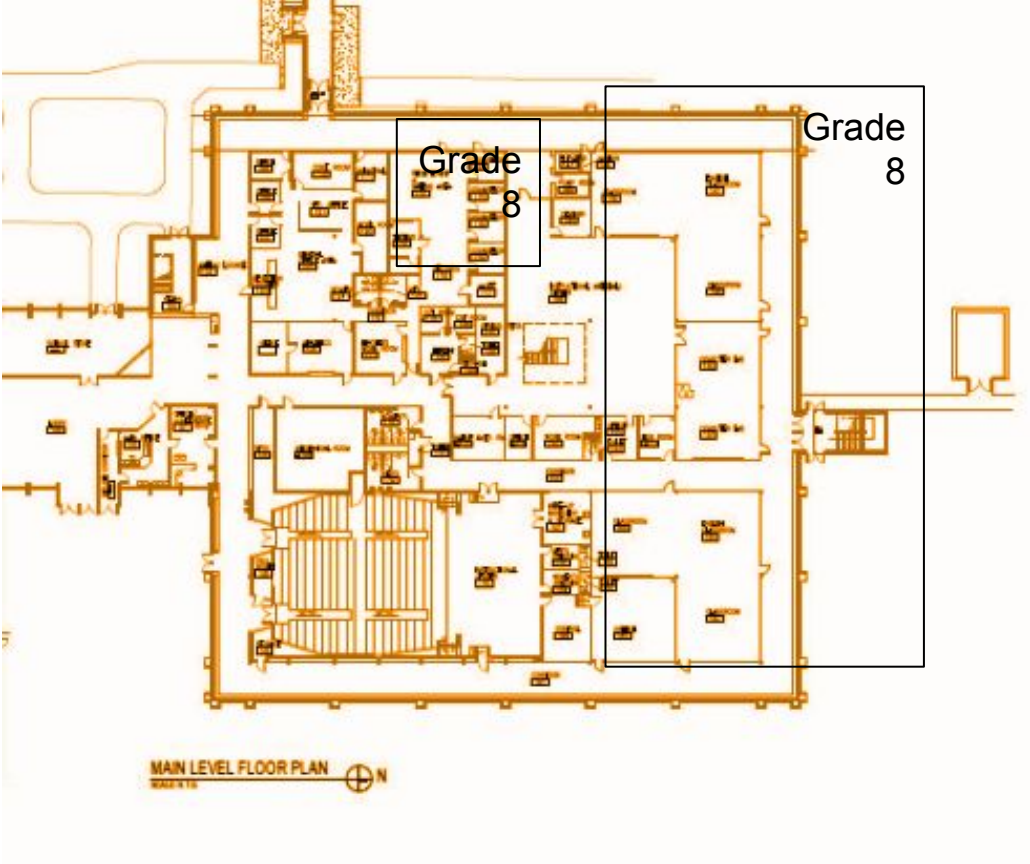
1. Math, Science, Technology
2. Social Studies, English Language Arts



Proposed High School Grade 8-12

Scenario 1

- 1. Regular 7 Period Day
- 2. Counseling and Native American Services
- 3. Intervention Programming
- 4. 8th Grade Lunch



Proposed Middle School 5-8

Scenario 2

7:15-7:50 SPARK Little Gym

8:00-10:25 Core 1 or Core 2

10:30-11:00 WIN

11:00-11:35 Lunch and Recess

11:40-12:25 Specials

Art

Music/Beg. Band

PE 1

PE 2/Health

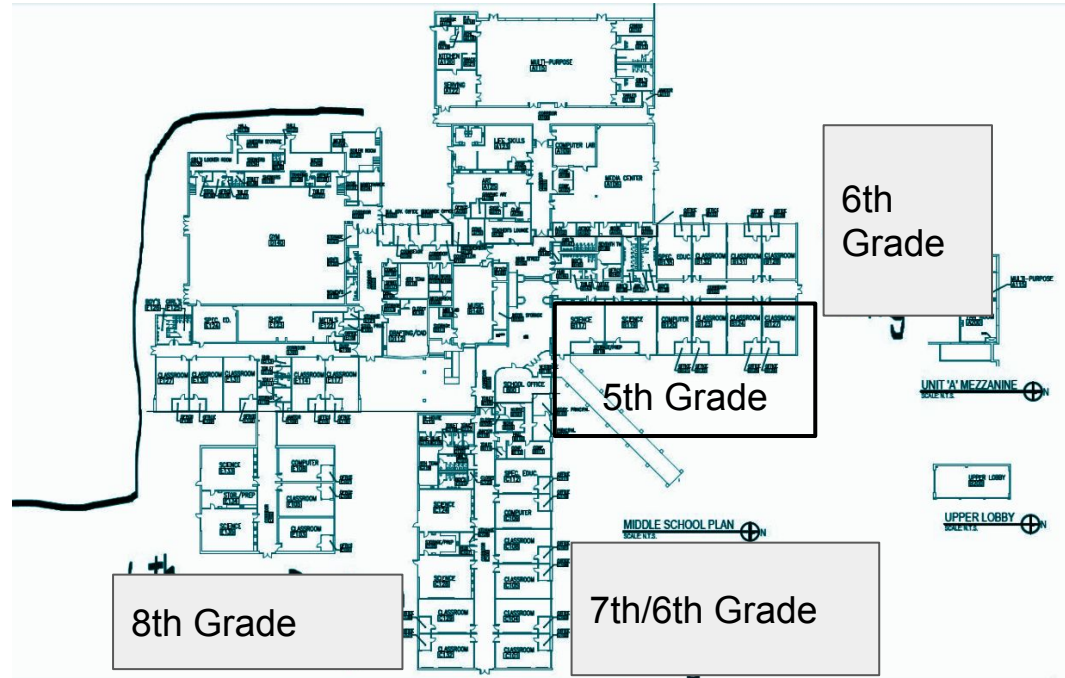
STEM

12:30-2:50 Core 2 or Core 1

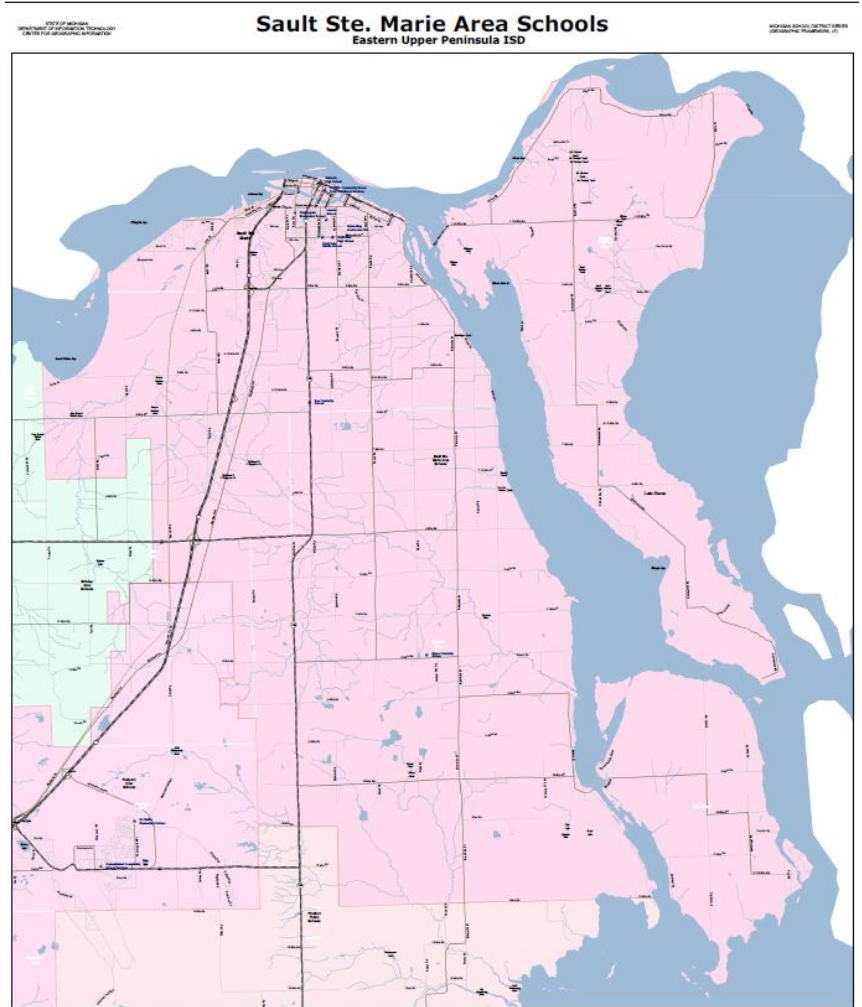
2:50-3:00 Check Out (Planner, Homework, Pack Up)

CORE-

1. Math, Science, Technology
2. Social Studies, English Language Arts



Transportation Services



Transportation Information



10 Drivers
2 Substitute Drivers



13 Busses
Full Bus 50-55 Students



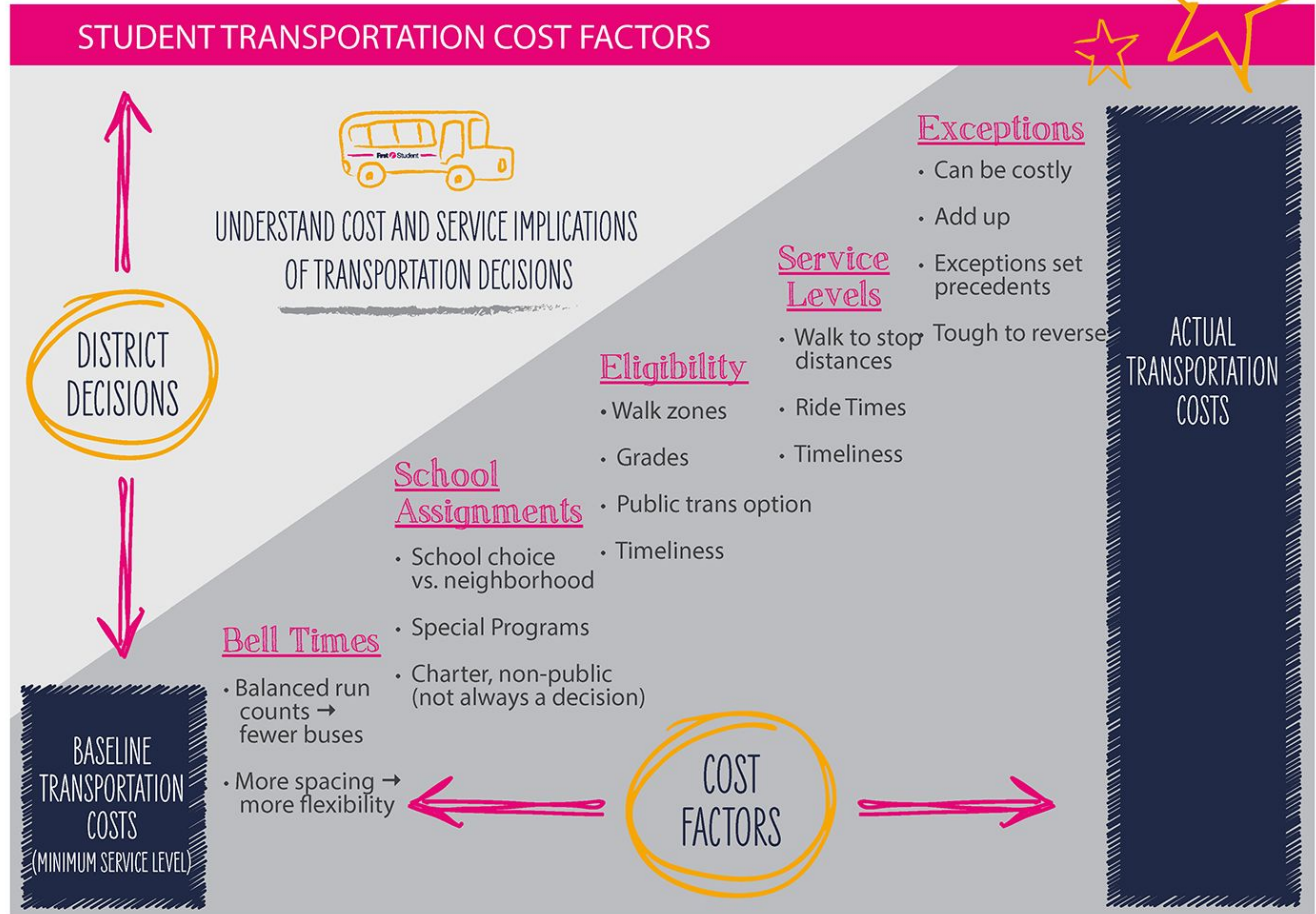
Over 600 Miles per Day



5-10 requests for
bussing changes per
week



900 Riders
500 Consistent Riders



Current Transportation Policies

- ★ Walk zone is a 1.5 mile radius from designated school
- ★ Visible designee required for all Kindergarten students
- ★ Bus passes are permitted by building principal
- ★ No maximum riding time established (1 hour is a general guideline)
- ★ Group stops are established to minimize ride length (½ mile radius)
- ★ Transportation requests will require established processing timelines

Transportation Policies for 2018

Continuation / Proposed	Rationale
<ul style="list-style-type: none"> ★ Walk zone is 1.5 miles from designated school ★ Visible designee required for all Kindergarten students ★ Ride time guidance remains at 1 hour except in established rural zones ★ Bus Passes are reviewed by transportation department ★ Transportation requests or changes may take up to one week ★ One Pick up and Drop Off Location per student 	<p>*Actual Drive Time vs Ride Time When a car takes 20 to 30 minutes to get to town we can't expect a bus make stops and arrive in an hour or less.</p> <p>*Causal Relationship As stops decrease- ride time decreases As stops increase- ride time increases As changes increase-pick up and drop off times are less reliable</p> <p>*Transitional and Part Time Riders Bus passes can change the route increasing time or exceeding rider capacity and will be handled by the Transportation Department Week on and Week off riders disrupt routes for all parents "Just in case" stops must be removed Minimum ride amounts enforced</p> <p>*Individual needs vs. the Entire Route A change for one stop could change the route times up to 10-15 minutes, impacting all families on that route Multiple Locations per Student is requiring daily routing changes impacting everyone on the route</p>

If Reconfiguration is approved...

Teams will visit schools successfully implementing the following for consideration...

- ★ Grade Level Teams
- ★ Transportation Services
- ★ Multi-tiered Systems of Support
- ★ Family Service Provider
- ★ Elementary Counseling Services
- ★ Before and After School Programs

Reconfiguration Discussion 2018

District Priorities

- Maintain high quality educational programming despite declining enrollment
- Equitable alignment of State and Federal Resources
- Balanced class sizes
- Efficient use of building space